



**Nga Tai e Wha o Taranaki  
Saturday 11 March 2023**

**New Plymouth Yacht Club, Oceanview Parade, Ngāmotu Beach, New Plymouth  
Panui 2**

**Event Summary**

*Taranaki Outrigger Canoe Club welcome you to Nga tai e Wha o Taranaki to be held at Ngāmotu Beach, New Plymouth. This is our first long distance open water race on the West Coast of Taranaki. The timing of this event showcases the best of Taranaki conditions and provides a warmup opportunity before Long Distance Nationals.  
This event will be based at the New Plymouth Yacht club situated at the western end of Ngāmotu Beach. Registration and administration will be inside the yacht club.*

**Race Details**

<b>Race1: W6 Short Course</b>	<b>8 -11km</b>	<b>Novice</b>	<b>J19-Youth / Novice/Women / Men / Mixed</b>
<b>Race2: W6 Long Course</b>	<b>19 -22km</b>	<b>Experienced</b>	<b>Women / Men / Mixed</b>

**Registrations:**

Please register via Waka Ama Nz Website [Nga Tai e Wha o Taranaki](#)

**Race Fee:**

\$20.00 per person for 1 Race    \$30.00 for 2 Races

**Refund Policy**

- No refunds will be given for any withdrawals after 5 March 2023
- No refund will be given if the event is cancelled due to a natural disaster or extreme weather
- Race day set for the Saturday March 11. Due to port commitments this is the only day option for us. We did have an alternate plan for a river race in Panau 1, however logistically this is not possible re support boats and the infrastructure required to run the event so we have moved on from this an option.

## Race Day Information

### Venue: Ngāmotu Beach



Ngāmotu Beach has great facilities for a whanau day out. Great playground for the kids, large grassed, area for picnic/gazebos etc. Safe Swimming Beach.

**Kai:** Hot kai for all paddlers is included in the race fee and will be provided inside the Yacht Club after the race.

Coffee Cart and Food Truck Vendors will be available on- site. Paddlers, supporters and spectators are welcome to purchase kai from food vendors or from local cafes/restaurants.

**Toilets:** Toilets are available inside the Yacht Club and also at the Playground at Ngāmotu Beach.

**First Aid:** First Aid will be available at the registration tent, via main driveway.

**Rubbish/Recycling:** We encourage you to please take what you bring. However, the main rubbish and recycling station is located by the childrens playground.

**Alcohol/Smokefree:** Alcohol, smoking, vaping and any other substance use is not permitted at this event, including all premises of the event.

**Please respect our Beaches and be a tidy kiwi.**

### Parking of Waka & Trailors Ocean View Parade Moturoa

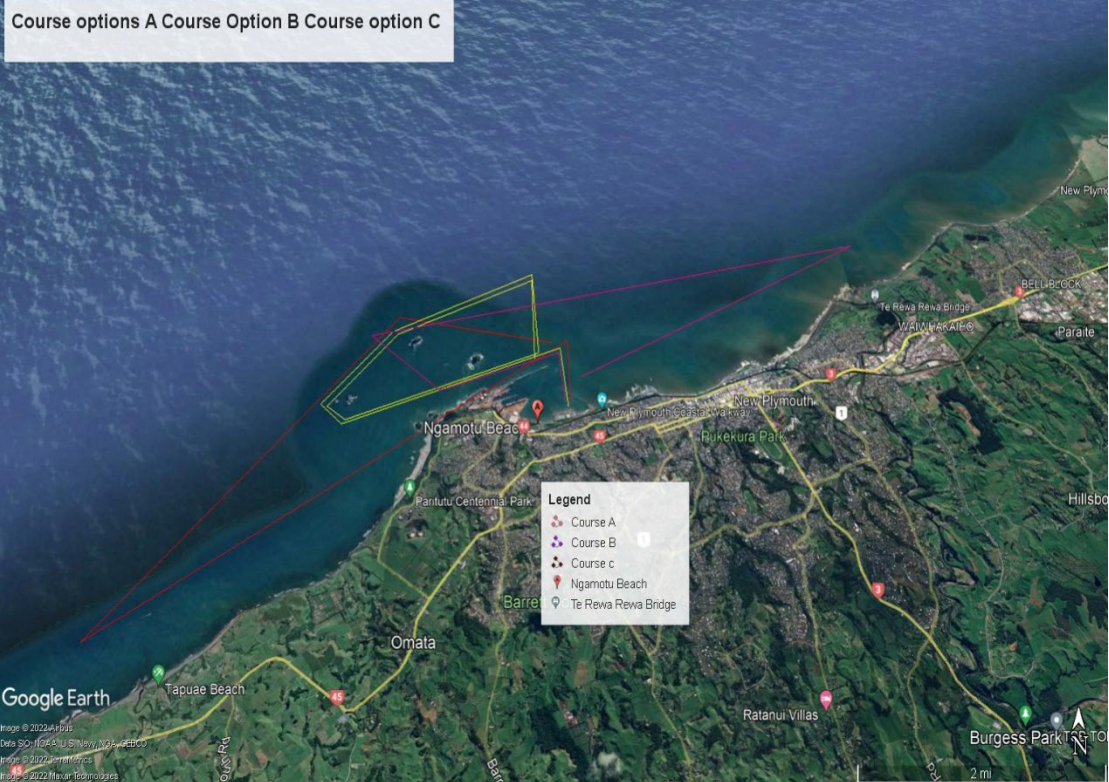


Parking will be open early on Saturday but in the event that you plan to come in the night before, Friday the 10<sup>th</sup> please contact the organisers, Karen 0272413881 or Nikyla 021375537 and we can arrange access to the domain for overnight storage.

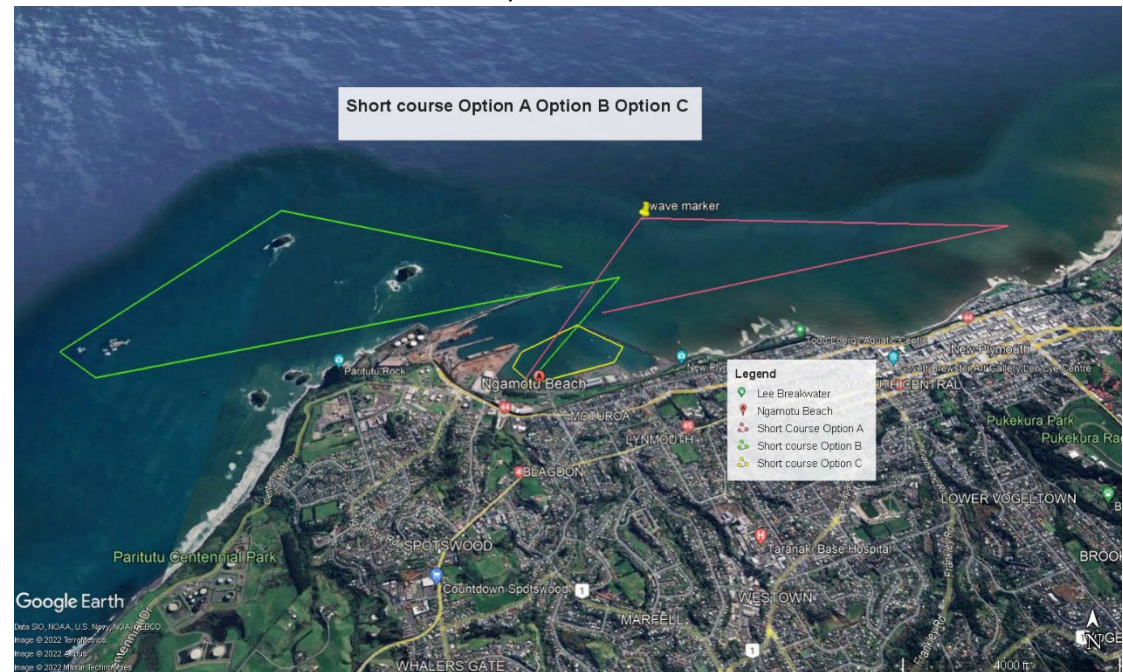


## Course Information and Maps

Long Course / 19-22 km - The Final Start/Finish position and Final Race Course TBC



Short Course: 8-11km – The Final Start/Finish Position and Final Race Course TBC



We have 3 course options available. The decision on course will be made in the week leading up to the event. All be it we are trying to present the best course for you all, with both long open water stretches and the dynamics of island racing. However your safety is paramount and this will be the main factor when the course is

finalised. It is a king tide the day of the event so we will limited beach space so the plan is to run the second race 1 hour after the first to enable a quick turn around with out to much loss of beach.

### **Waitara River Course – Bad weather option**

#### **Removed as an option due to logistical issues**

#### **Race scedule**

0700 Openeing karakia  
0720 Safety Breifing  
0745 Waka checking  
0815 Race 1 briefing  
0830-9 First race set off  
Second race check  
1130 Race set off  
Prize giving

#### **Back-Up Race Day**

Due to a recently planned event being booked on the Sunday the 12th we no longer have this day as an option for use of the port.

#### **Race Rules:**

- W6 canoes must have 2 bailers and 1 spare paddle. 2 forms of communication – vhf & cellphone. **The number for the cell phone that is carried is to be recorded on your check in form.**
- All short course paddlers **ARE** required to wear PFDs. NOTE: Buoyancy Aids/Tubes do NOT constitute a PFD.
- Long course/experienced paddlers a life jacket is required for waka safety checks. A decision will be made on the day if these must be worn or can be carried.
- All waka will pass a safety check and be marked before racing. Any boats not marked will not be permitted to race.
- As this is an open ocean event there is a minimum age limit of 16 years as per WANZ guidelines. Junior paddlers are only permitted in the short course race.
- All W6 Canoes must have a towrope fitted to the canoe. The rope must be at least 12mm diameter and a minimum length of 25 metres. Must be rigged for towing as part of the safety check.
- All boats must have spray skirt available on the day. Race organiser's reserve the right to make spray skirts compulsory if required.
- The Race Organisers have the discretion to cancel the race, refuse entry to crews for any reason related to safety of participants.
  - All steerers and team captains must attend the race briefing.
  - A Team must TAG/ nominate their team captain on the Waiver Form.
- Should a waka require assistance during the race, any paddler must hold their paddle up vertically so that an official rescue boat or any passing waka can render assistance.
- In all races the lead canoe will have right of way.
- On-coming waka and craft must approach 'port to port' or ama to ama'.

- Competitors should dress appropriately for the conditions (including cooler conditions if required - polypropylenes recommended)
- The Race Director and his/her officials have absolute control of the event. They have the discretion to withdraw any competitor or waka which in their opinion is or will be endangering his/her or others safety.
- Race organisers will arrange official support boats, which will be marked with flags. Novice paddlers are considered to be within their first year of paddling Novice races will commence if weather conditions are suitable. Novices Team must have an experienced and competent steerer.

### **Event Waiver**

All participants (teams and individual) must complete an event waiver. The event waiver can be found online here: [Nga Tai e Wha o Taranaki](#)

If you can download and complete it prior to the event this will cut down your registration time, however all registration paperwork will be available on registration on site.

### **Competitors Ability**

We are providing opportunities for experienced and capable crews aged 16 and above. The term “experienced” means that teams and individuals have experience in open sea conditions.

All Clubs are responsible for ensuring that all paddlers are fit and competent in the race that they have been entered into.

The Race Director who will be on water during both events has the discretion to withdraw a team or an individual who is deemed to be unfit or unprepared to complete the race.

### **Trollies:**

4-5 trollies will be on site to move the wakas from the parking area to the beach. We have to cross a public road from one domain to another so if you have the ability to bring one please do.

### **Local Accommodation Options:**

There are many local accommodation options including:

Belt Road Seaside Holiday Park – 1km from Ngamotu

Fitzroy Beach Holiday Park – 6km away

Oakura Beach Camp – 15km away

The Dawson Motel -7km away

Bella Vista Accomodation 7km away

### **Merchandise:**

We are in the process of finalizing a tee to commemorate our first event

### **Any queries please contact:**

Club Secretary: Rosie Johnson, 027 7567174, [info.taranakiocc@gmail.com](mailto:info.taranakiocc@gmail.com)

Event Manager: Nikyla Fraser 021 375 537

Event Co-ordinator: Karen Bergman Sutton 027 241 3881

Club President: Nathan Tuuta 027 627 5363

Club Captain: Shiromi Smith 021 2381396

**Registration and Payment:**

Registration is on the WANZ website. Entries close Midnight the 7<sup>th</sup> of March with the roster closing midnight the 8<sup>th</sup> of March. Payment required prior to race day please. Non payment will result in non racing.

Please ensure payments are marked with the name used to register so we can collate.

Payments to Taranaki Outrigger Canoe Club TSB account 15 3953 0774834 003

In closing. We are working hard to try to make this a memorable event both as a paddler experience and to showcase our club. You will find several short videos showcasing our club and the area both on the WANZ website and our face book page.

We really appreciate you reading this Panui and if you think this event is something you think interests you please register ASAP. We have some things in mind and an early indication of numbers will help to get those finalized.

Regards

Karen, Nikyla and Rosie

Event organisers

Taranaki Outrigger Canoe Club